

CERTIFICATE OF LOCATION OF GOVERNMENT CORNER

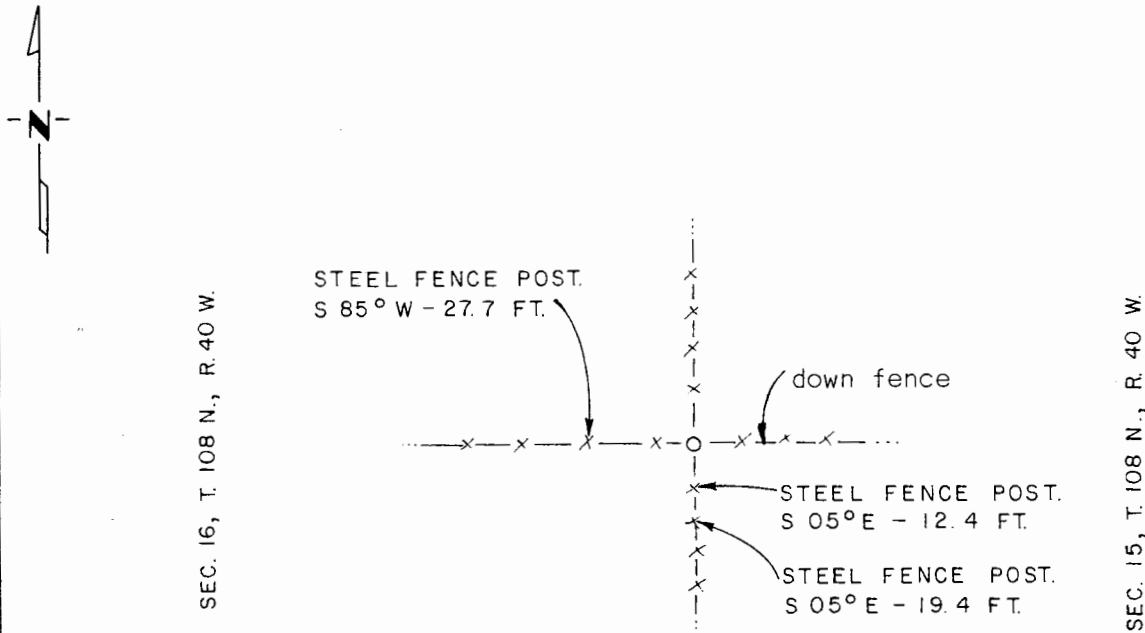
West Quarter Corner of Section 15, Township 108 N., Range 40 W., 5th P.M.

STATE OF MINNESOTA, County of Murray

At the corner location shown on the sketch:

- On _____ found a _____
DATE
- left monument as found, lowered monument, removed monument (explain)
- On Oct. 22, 1980 placed a 1/2" iron reinforcing bar with "L S 12967" cap per
DATE evidence of north-south and east-west fence line intersection.

SKETCH OF REFERENCE TIES



I hereby certify that this document and the data contained herein was prepared by me or under my direct supervision.

[Signature] 12/23/81
SIGNATURE DATE

Registration No. 12967

- Land Surveyor, Professional Engineer
- County Surveyor, County Engineer

OFFICE OF THE COUNTY RECORDER

County of Murray

I hereby certify that this document was filed in the Co. Recorders office at 10 A.M. on the 18th day of February A.D., 19 82

County Recorder Willard W. Ohme

By _____, Deputy

DOCUMENT NO. _____